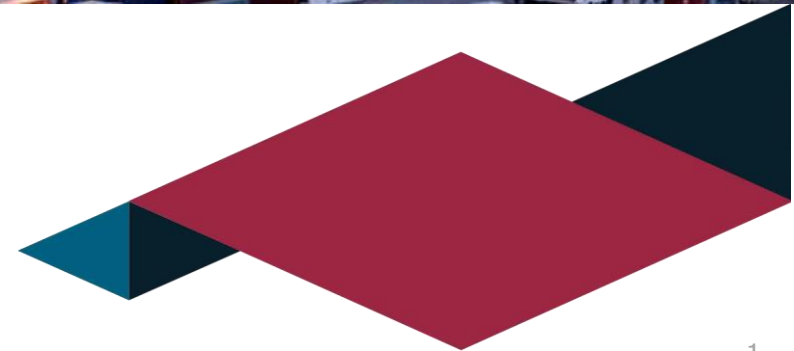


Your Vision. Our Space.



“**LogiPoint is the leading industrial and logistics real estate developer in Saudi Arabia, investing in, managing and operating bonded and non-bonded logistics parks and zones. These facilities provide specialized infrastructure to the supply chain and logistics industries, enabling clients to achieve operational excellence.**”



➤ Vision

To be leaders of logistics real estate in developing economic zones and logistics parks across the entire Kingdom of Saudi Arabia, providing innovative value-added services.

➤ Mission

To continuously pioneer the development and operations of advanced logistics parks & economic zones in Saudi Arabia, and to remain the partner of choice to our clients and contribute to their successes by offering reliable, cost-effective and high-quality logistics real estate & value-added solutions.

**1.0 Million M²
Under Management**

**0.6 Million M²
Development Pipeline**

**1.4 Billion SAR
Planned Capital Deployment**

**7.5 Years
Average age of warehouses**

LogiPoint Backed By Established Industry Leaders:

76% سيسكو القابضة
SISCO HOLDING

24% XENEL



Sustained Infrastructure Holding Company (SISCO) was established in 1988 and today is one of the Kingdom's prominent groups, having large scale capital investments in desalination plants, free zone ports & terminals, industrial estate development and other key projects.

Established in 1973, Xenel traces its roots to the descendants of one of the oldest trading houses in the Middle East with the first commercial registration in Saudi Arabia. As an acknowledged innovator and leader in developing projects and companies, both regionally and internationally, Xenel has built expertise in the fields of industrial manufacturing, healthcare, infrastructure, logistics, services and real estate.

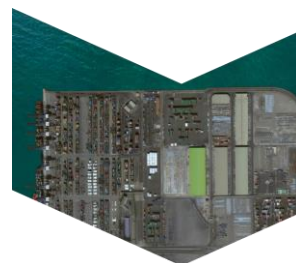
WITH PROVEN TRACK-RECORD



The Beginning Of Our Journey



2nd Village Was Inaugurated



Village 4 Was Inaugurated



TUSDEER and ISNAD Merged



Birth Of LogiPoint



UWC-JLH Groundbreaking



Handover of Aramex Warehouse



First Warehouse Village

3rd Village Was Inaugurated

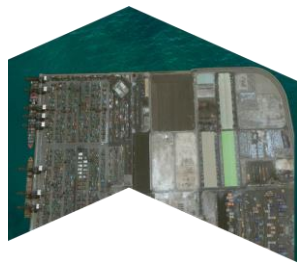
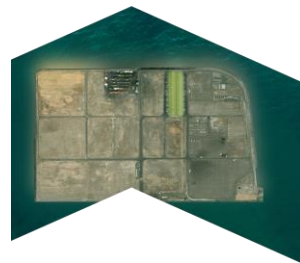
TUSDEER Won Award To Develop & Operate JLP

ISNAD Collaboration With MODON

Amazon become Tenant for Village 4

Handover of Village 5 Warehouse

Handover of UWC Warehouse



FLOURISHING TOGETHER WITH LONG-TERM ASSOCIATION



 Unilever	 binzagr	 United Warehouse Company Limited شركة المخازن المتحدة المحدودة	 amazon	 ECU LINE	 MAERSK
 B&S group	 مؤسسات سقالة Cigalah Group	 Abdul Latif Jameel	 NAQEL EXPRESS	 CMA CGM	 FREIGHT SYSTEMS Supply Chain Solutions
 LIQA	 MARS Global Services	 DSV	 aramex	 DHL EXEL SUPPLY CHAIN	 alzafer
 SAMAQO AUTOMOTIVE DIVISION	 سابق عبدالهي	 أرامكو السعودية saudi aramco	 المجدوعي Almajdouie	 Agility	 Carrefour

FLEXIBLE LOGISTICS REAL ESTATE SOLUTIONS

BUILT-TO-DEMAND

Our general warehousing & Logistics parks meet the needs of most clients in terms of size, grade and lease terms, allowing for cost-effective solutions.

BUILT-TO-SUIT

We build close partnership with clients to understand their needs and use our expertise in industry specific infrastructure & Logistics facilities to deliver the most optimal solution.

SITE SELECTION

CLIENT REQUIREMENT

MASTER PLANNING

PERMITS

CONSTRUCTION

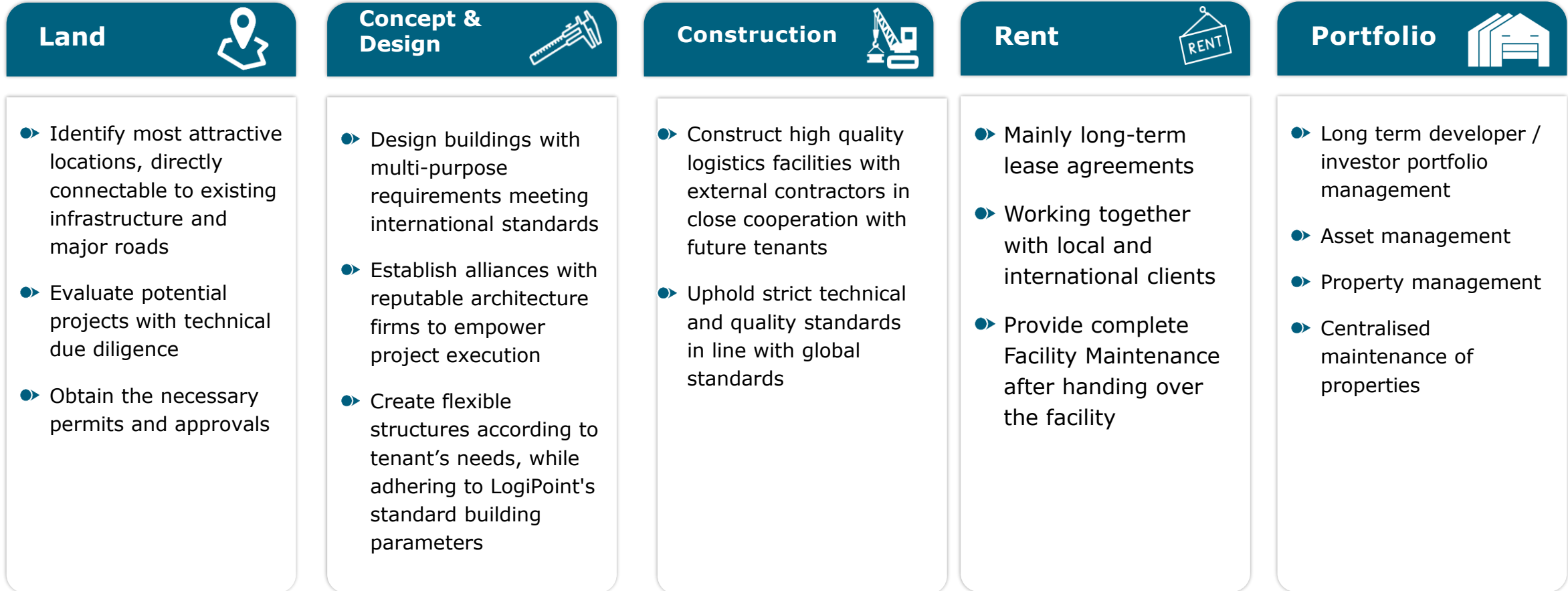
FACILITY MANAGEMENT & SERVICES

TRADE FACILITATION FOR GLOBAL COMPANIES

- ✓ Market Penetration
- ✓ Proximity To Saudi And Neighboring Market
- ✓ Distribution Center For The Red Sea
- ✓ Bonded & Re-Export Hub
- ✓ Logistics Support Services
- ✓ Inventory Cost Optimization



Ensuring Success Through a Fully Integrated Business Model

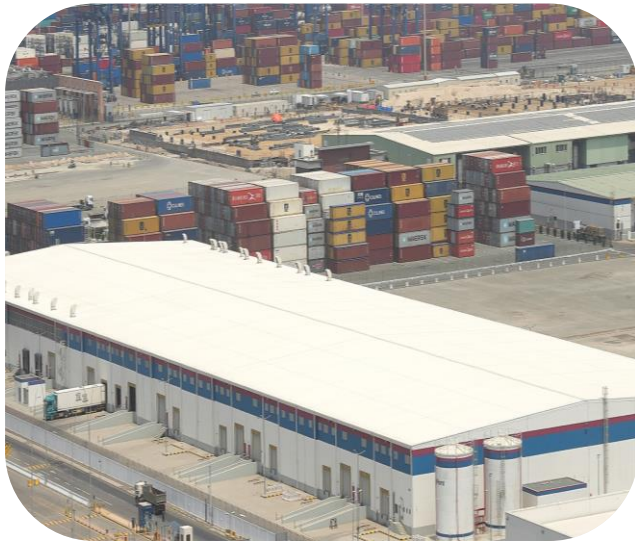


LogiPoint's Existing and Upcoming Locations

Existing Locations

	Bonded & Re-export Zone Jeddah Islamic Port, Jeddah	Jeddah Logistics Hub MODON, Jeddah	Al-Noor Logistics Park Al-Masha'el, Riyadh
Total Area	900,000 M ²	120,000 M ²	31,000 M ²
Total Warehouse Area (Built-Up)	125,000 M ²	36,000 M ²	18,300 M ²
Capital Deployed	SAR 600 Million	SAR 200 Million	TBA
Layout			

VILLAGE 5 FACILITY



A multipurpose and multi-user Grade A warehousing facility including temperature-controlled, ambient, cold store, freezer, and pharmaceutical chambers.

2023
Completion
Year

48,215 M²
Total Built Up
Area

14 MONTHS
Construction
Duration

26,916 M²
Gross Floor
Area

74 MILLION
Project Total
Cost

9.8 - 12.25 M
Building
Height

ARAMEX BTS FACILITY



Grade A Built-To-Suit warehouse and office space designed to serve customer's regional distribution requirements

2023
Completion
Year

40,071 M²
Total Built Up
Area

12 MONTHS
Construction
Duration

20,370 M²
Gross Floor
Area

61 MILLION
Project Total
Cost

9 M
Building
Height

UWC BTS FACILITY



Grade A Built-To-Suit cold store warehousing facility designed as per client's operational requirements

2024
Completion
Year

15,730 M²
Total Built Up
Area

16 MONTHS
Construction
Duration

12,396 M²
Gross Floor
Area

71 MILLION
Project Total
Cost

14.8 M
Building
Height

LME Approved Goods Delivery Point

LogiPoint's Bonded & Re-export Zone is the only approved delivery point for copper and zinc in Saudi Arabia.

London Metal Exchange: Handles over 80% of global non-ferrous trade and operates in 34 locations across 14 countries.

World-Class Infrastructure: LogiPoint's state-of-the-art, ESG-compliant facilities, supported by robust controls and processes, were key in winning LME approval.

Strategic Location: LogiPoint and Jeddah are ideal for re-export, providing duty-free storage in the BRZ with quick access to regional markets.

Economic Diversification: Expands the economic ecosystem by developing new trade opportunities.

Vision 2030 Alignment: Positions Saudi Arabia as a global logistics hub serving international trade.

Established in 1877, LME is the world's largest market in options and futures contracts on base and other metals.

- ▶ Non-Ferrous Metals
- ▶ Precious Metals
- ▶ Ferrous Metals
- ▶ EV Metals



Our Distinctive Logistics Services

Supporting Our Clients in Their Operations:



Customs Clearance

- ▶ One of the first corporate entities in KSA to obtain Customs Clearance license.
- ▶ Provides round-the-clock clearance services through Saudi Customs Portal.

Value Added Services

- ▶ The only entity in the Kingdom offering value-added services (unbundling, labelling, palletizing, consolidation, re-packaging) and pre-customs clearance.

Warehousing Operations

- ▶ Managing warehousing and yard operations on behalf of 3PL and major petrochemical customers.
- ▶ Having in-house reefer plugs where the containers can be plugged live to ensure the safety of all temperature-controlled goods.

Transport & Deliveries

- ▶ Provides bonded multi-modal deliveries and distribution across the GCC region.
- ▶ Provides transparency through state-of-the-art GPS based location system.

TOKENS OF APPRECIATION RECEIVED OVER THE YEARS



Logistics Hub of the Year 2025
By Logistics News



Logistics Real Estate Of The Year 2023
By Logistics News



Integrated Logistics Zones Of 2022
By Logistics Gulf News



Logistics Real Estate Of The Year 2024
By Logistics News



Logistics Real Estate Of The Year 2022
By TLME



ESG CEO Of The Year 2022
By Sustainability Innovation Awards



Seatrade Maritime Supply Chain & Logistics Award 2019
By Seatrade Maritime Awards



Excellence Award 2023
By ZATCA



CEO Of The Year 2023
By Logistics News



Logistics Hub Of The Year 2021
By TLME



Supply Chain Hub Of The Year 2021
By Logistics Awards



State-Of-The-Art Infrastructure



Short-Term & Long-Term Warehouse Lease



Cold Chain Logistics



Built-To-Suit Facilities



Industrial Outdoor Storage



Specialized Logistics Services

